



Noise Monitoring Result

Day Time (0700 - 1900hrs on normal weekdays)

Location: M1a - Harbour Road Sports Centre

Date	Time	Weather	Measurement Noise Level			Baseline Level	Construction Noise Level	Limit Level
			Leq	L10	L90	Leq	Leq	Leq
Unit: dB(A), (30-min)								
02/02/15	9:50	Fine	73.0	75.5	68.5	72	65	75
10/02/15	11:12	Fine	72.2	75.0	67.0	72	72	75
17/02/15	9:33	Cloudy	70.6	73.5	64.0	72	71	75
25/02/15	10:35	Cloudy	70.4	73.0	64.5	72	70	75

Location: M2b - Noon-day gun area

Date	Time	Weather	Measurement Noise Level			Baseline Level	Construction Noise Level	Limit Level
			Leq	L10	L90	Leq	Leq	Leq
Unit: dB(A), (30-min)								
02/02/15	10:40	Fine	70.1	72.0	66.5	68	67	75
10/02/15	13:20	Fine	70.8	73.5	67.0	68	68	75
17/02/15	10:19	Cloudy	69.6	71.0	66.5	68	65	75
25/02/15	11:19	Cloudy	70.8	72.5	67.5	68	68	75

Location: M3a - Tung Lo Wan Fire Station

Date	Time	Weather	Measurement Noise Level			Baseline Level	Construction Noise Level	Limit Level
			Leq	L10	L90	Leq	Leq	Leq
Unit: dB(A), (30-min)								
02/02/15	13:40	Fine	65.9	67.0	63.5	69	66	75
10/02/15	14:05	Fine	65.3	66.5	62.5	69	65	75
17/02/15	10:55	Cloudy	64.8	66.0	62.5	69	65	75
25/02/15	13:00	Cloudy	64.1	66.0	62.5	69	64	75

Location: M4b - Victoria Centre

Date	Time	Weather	Measurement Noise Level			Baseline Noise Level	Construction Noise Level	Limit Level
			Leq	L10	L90	Leq	Leq	Leq
Unit: dB(A), (30min)								
02/02/15	14:20	Fine	67.4	69.0	64.5	67	51	75
10/02/15	14:45	Fine	66.3	67.5	63.0	67	66	75
17/02/15	11:30	Cloudy	64.8	66.0	63.0	67	65	75
25/02/15	13:43	Cloudy	66.2	68.5	62.5	67	66	75

Location: M5b - City Garden

Date	Time	Weather	Measurement Noise Level			Baseline Level	Construction Noise Level	Limit Level
			Leq	L10	L90	Leq	Leq	Leq
Unit: dB(A), (30min)								
02/02/15	15:00	Fine	67.3	69.0	64.5	68	67	75
10/02/15	15:25	Fine	67.3	68.5	64.5	68	67	75
17/02/15	13:10	Fine	67.0	67.5	63.5	68	67	75
25/02/15	14:25	Cloudy	67.8	68.5	64.0	68	68	75

Location: M6 - HK Baptist Church Henrietta Secondary School

Date	Time	Weather	Measurement Noise Level			Baseline Level	Construction Noise Level	Limit Level
			Leq	L10	L90	Leq	Leq	Leq
Unit: dB(A), (30-min)								
02/02/15	15:40	Fine	73.1	74.0	71.0	71	69	70
10/02/15	16:05	Fine	72.5	73.5	70.5	71	68	70
17/02/15	14:14	Fine	72.5	73.0	70.5	71	68	70
25/02/15	15:05	Cloudy	72.0	73.0	70.0	71	66	70



Noise Monitoring Result

Day Time (0700 - 1900hrs on normal weekdays)

Location: M7e - International Finance Centre (Eastern End of Podium) (Reference Station)

Date	Time	Weather	Measurement Noise Level			Baseline Level	Construction Noise Level	Limit Level
			Leq	L10	L90	Leq	Leq	Leq
Unit: dB(A), (30-min)								
03/02/15	9:08	Fine	68.6	69.5	64.5	67	64	N/A
10/02/15	9:55	Fine	72.2	74.5	67.0	67	71	N/A
16/02/15	10:00	Fine	66.4	67.5	63.0	67	66	N/A
25/02/15	9:10	Cloudy	66.6	67.5	62.5	67	67	N/A

Location: M7w - International Finance Centre (Western End of Podium)

Date	Time	Weather	Measurement Noise Level			Baseline Level	Construction Noise Level	Limit Level
			Leq	L10	L90	Leq	Leq	Leq
Unit: dB(A), (30-min)								
03/02/15	10:17	Fine	65.4	67.0	62.5	69	65	75
10/02/15	10:30	Fine	68.6	70.5	65.0	69	69	75
16/02/15	10:30	Fine	66.5	68.0	63.0	69	67	75
25/02/15	9:45	Cloudy	64.7	66.0	62.5	69	65	75

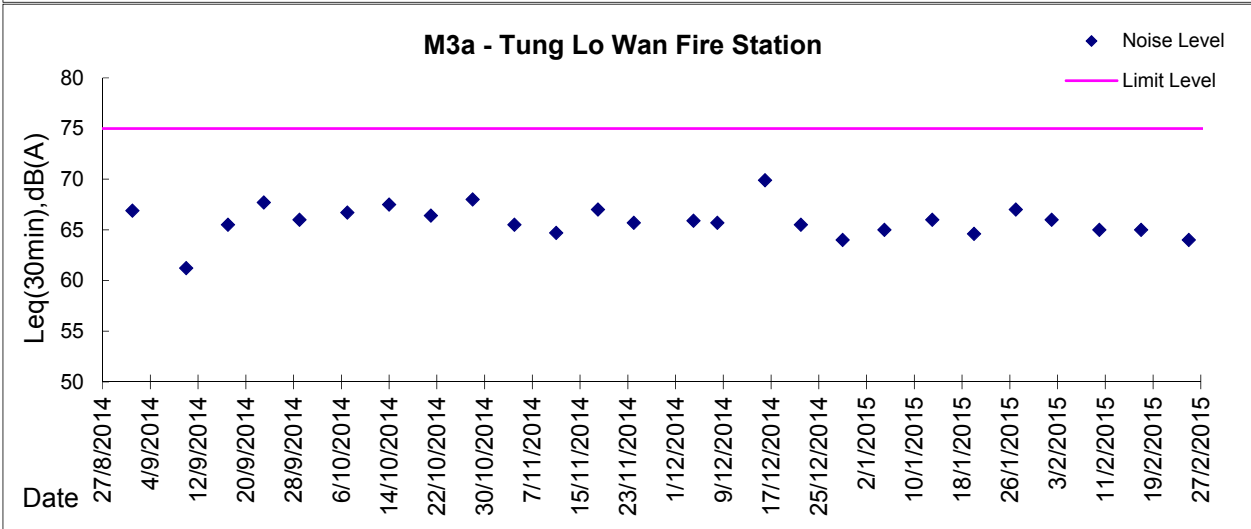
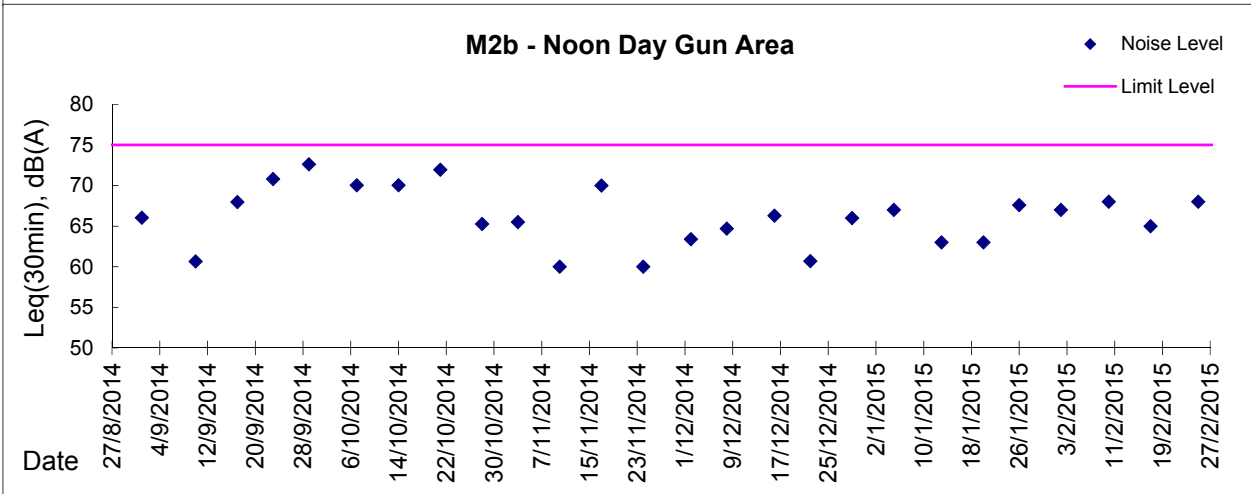
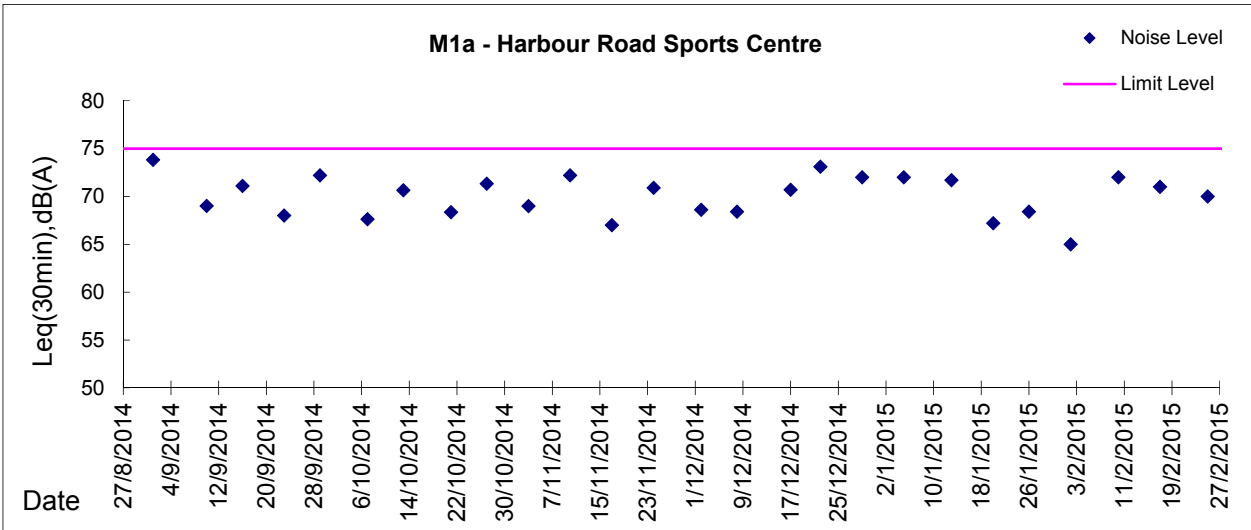
Location: M8 - City Hall

Date	Time	Weather	Measurement Noise Level			Baseline Level	Construction Noise Level	Limit Level
			Leq	L10	L90	Leq	Leq	Leq
Unit: dB(A), (30-min)								
03/02/15	11:08	Fine	61.2	62.5	56.5	64	61	70
09/02/15	13:14	Fine	60.4	62.5	57.0	64	60	70
16/02/15	9:10	Fine	62.2	64.0	57.0	64	62	70
25/02/15	8:30	Cloudy	60.8	62.5	57.0	64	61	70



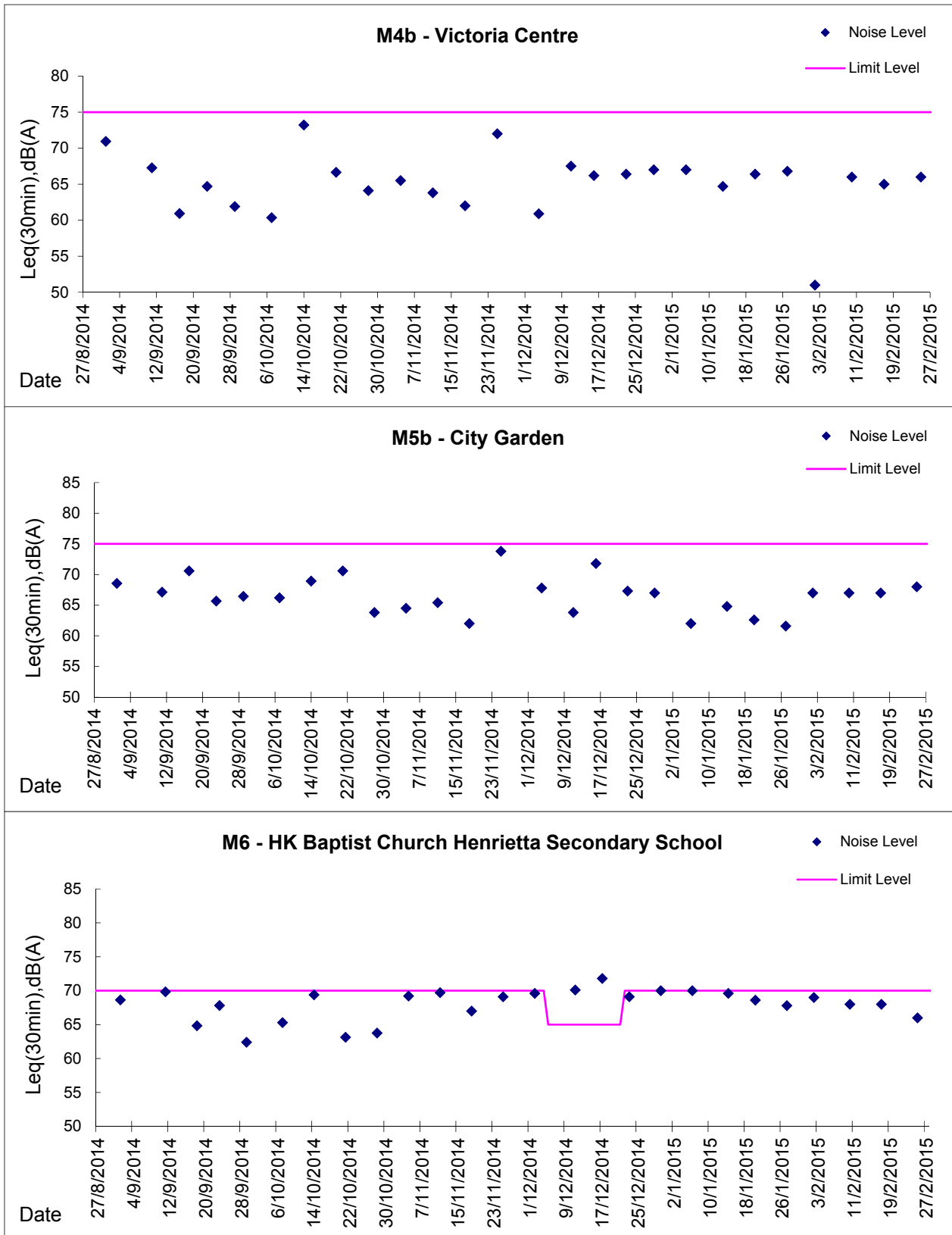
Graphic Presentation of Noise Monitoring Result

Day Time (0700 - 1900hrs on normal weekdays)



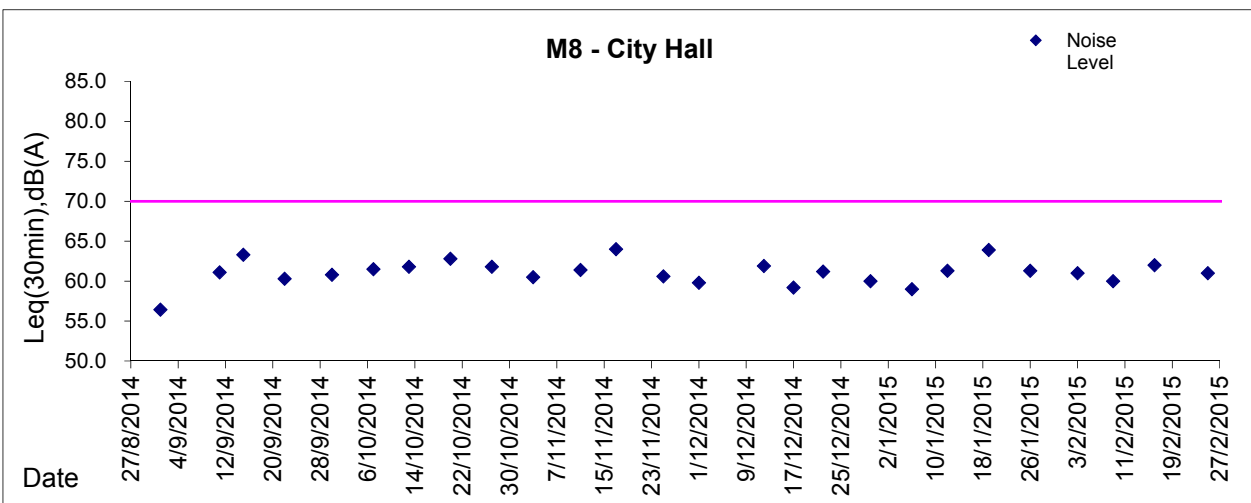
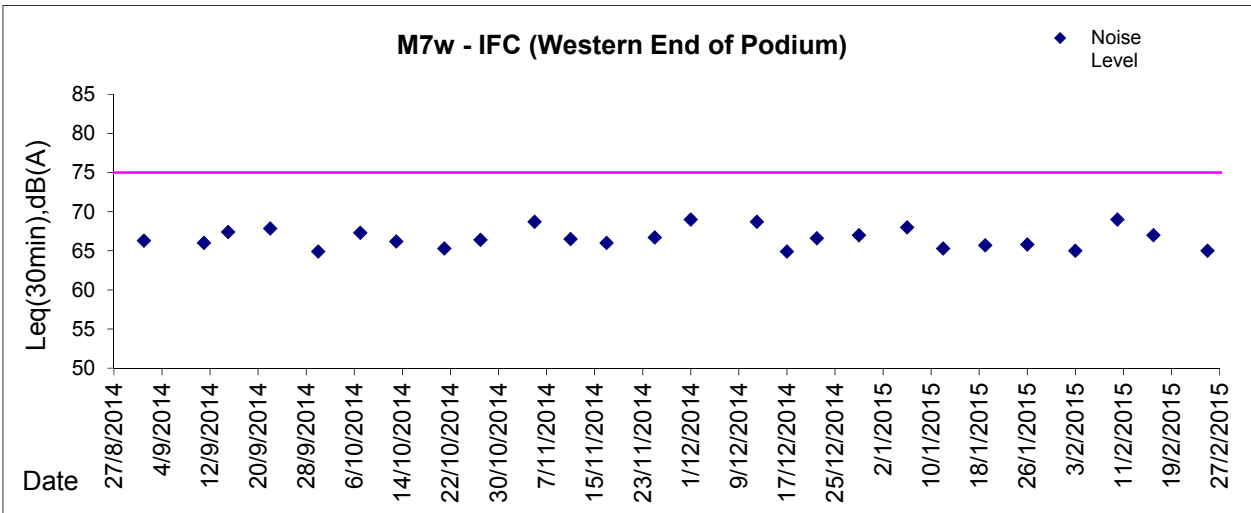
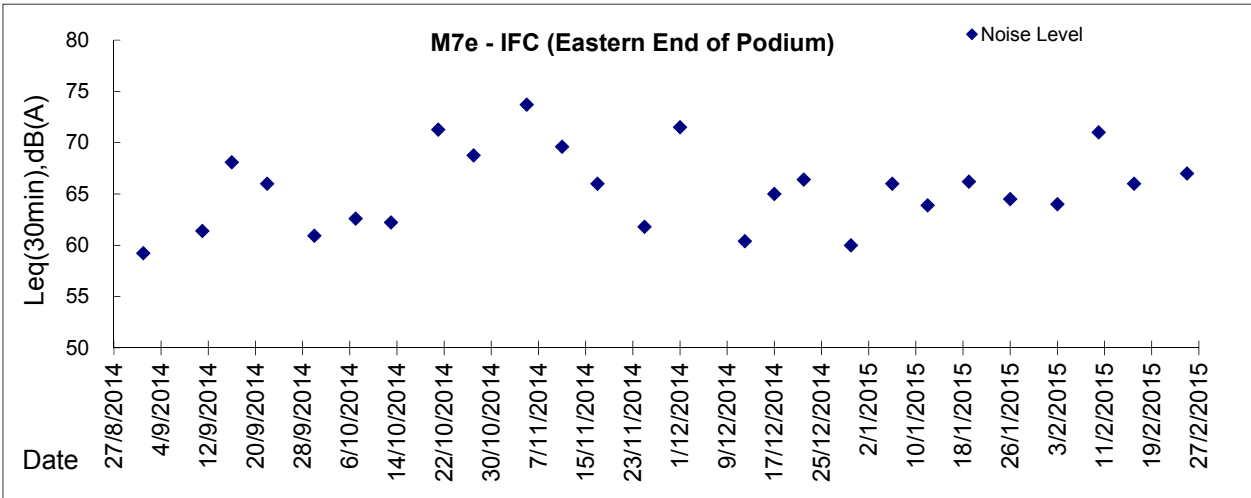


Graphic Presentation of Noise Monitoring Result
Day Time (0700 - 1900hrs on normal weekdays)





Graphic Presentation of Noise Monitoring Result
Day Time (0700 - 1900hrs on normal weekdays)



* Remark: M7e - IFC (Eastern End of Podium) is a reference monitoring station